

# Quartzline

FLOOR AND WALL SYSTEMS



Quartzline BV in Dordrecht develops and produces floor and wall systems for professional floor installers, applicators and finishing companies

# Index

- 3 Proud family business
- 4 Floor and wall systems
- 5 Quartzline Construct
- 6 Samples
- 8 Brochures
- 9 Satisfied with Quartzline
- 11 The factory
- 12 Our floor and wall systems
- 15 Fast delivery times
- 16 Quality and inspections
- 17 Innovation
- 18 Showroom and guided tour
- 19 Quartzline makes your life easier

# Proud family business

The popularity of seamless floor systems is growing every day. You'll find them in homes, companies, offices, hospitals, schools and so on.

In recent years in particular, we have seen an enormous advance in these floor systems, in particular the cast floor, which is extremely popular in homes. Quartzline BV makes an important contribution to the production of these floor systems. We do this in Dordrecht from a multi-functional factory with a state-of-the-art production and process installation.

Quartzline BV now ranks among the top in the Netherlands. We'd like to keep it that way and that is why we work on improving our floor and wall systems every day. We call this continuous product development. In our laboratories, innovation and quality research are part of the daily routine. We believe the best isn't good enough.

In this brochure we want to introduce you to Quartzline BV. We are very proud of what we do.

**Arthur Kaptein**  
*Director and owner*



# Floor and Wall Systems

The popularity of cast floors is easy to explain. Cast floors can be used for almost all usage situations. But let's start at the beginning.

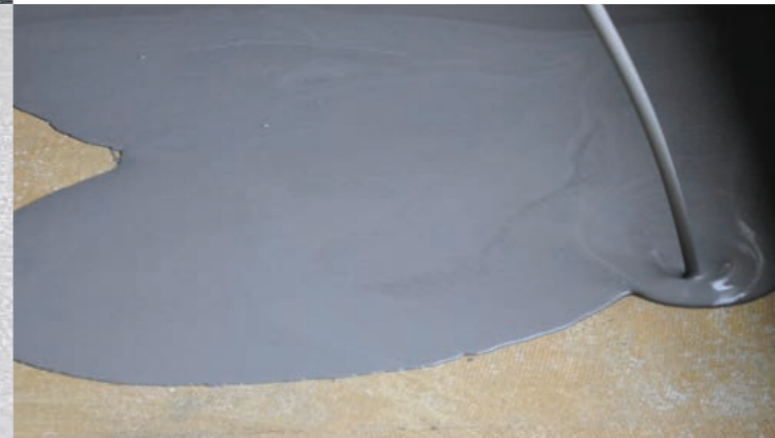
Our cast floors can roughly be divided into three types: the epoxy cast floor (EP), the polyurethane cast floor (PU) and the cement-bonded cast floor. An epoxy floor is harder than a polyurethane floor. The cement-bonded cast floor is a coloured cement-bonded floor, also known as a mineral cast floor.

Epoxy cast floors are mainly found in business and industrial environments, but also in healthcare and education. Polyurethane cast floors and the decorative cement-bonded floors are mainly found in homes and offices.

A good example of an epoxy floor is our Quartzline Protect SL-EP 2K floor system for industrial applications. A seamless and heavy-duty floor system with an optional hollow skirting finish. Our polyurethane Quartzline Deco floor systems are decorative cast floors with great user pleasure and available in a wide range of colours and designs. Various versions are available.

We supply cement-bonded floor and wall systems under the name Quartzline Cem. For example, we have Cem Decorative for a modern floor with a concrete-like appearance and Cem Micro for a cement floor and wall finish. Our professional knowledge and expertise in colouring quartz enable us to supply our epoxy floor systems in any desired colour and grain size.

# Quartzline Construct



for a smooth  
*subfloor*

It is, after all, a fact. A beautifully finished floor is only possible if the subfloor is smooth, strong and flat. Whether it concerns cement-bonded or gypsum-bonded levelling screeds, Quartzline Construct offers the best result for this. The Construct levelling screeds are available in different variants and strengths.

Quartzline Cementitious SL Underlayment are our cement-bonded levelling screeds and Alpha SL Underlayment are our gypsum-bonded levelling screeds. Both levelling screeds are for levelling (out) and correcting surfaces such as sand cement, concrete and (ceramic) tiles. Quartzline levelling screeds can be used under floor finishes such as cast floors, PVC, wood, linoleum, parquet, laminate.

Subfloors often need to be repaired or treated in another way first. Quartzline has all the necessary products and systems in stock for this. It shouldn't be a reason to delay a project.

You can collect Quartzline levelling screed directly from our factory in Dordrecht or we can deliver it to the location where the screed is needed.





# Samples

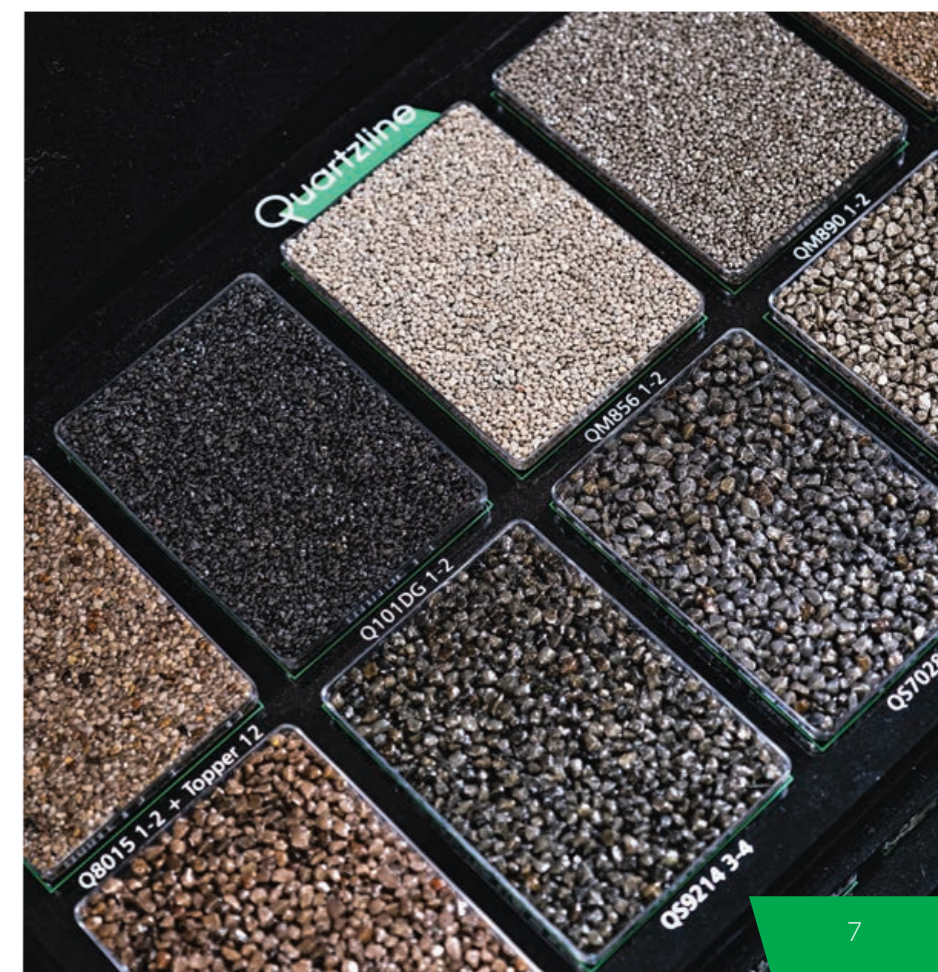
Quartzline offers its customers, such as floor installers and finishing companies, the necessary promotional material. This allows them to introduce and inform their customers about the extensive range of floor and wall systems developed and produced by Quartzline. The promotional material includes sample books, sample cases, brochures and samples.

In addition, we provide customer-specific samples. This often concerns colours that cannot be found in the sample books. These samples have an average delivery time of fourteen days.

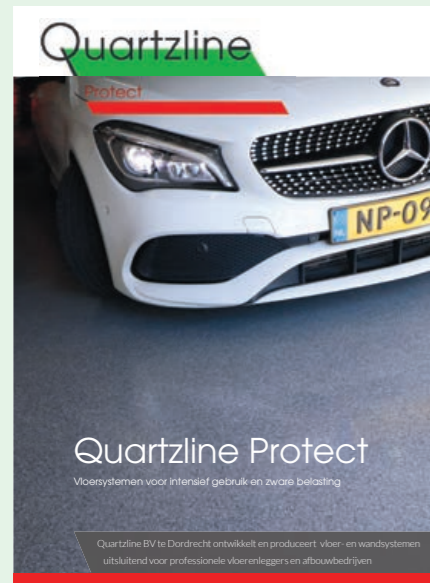
Furnishing showrooms of finishing companies and professional floor installers and providing large samples is custom work.

To make an appointment for this, please contact us on +31 (0)78 651 31 00.

Promotional material can be requested via the Quartzline account managers on +31 (0)78 651 31 00 or via the website under the 'samples' button.



# Brochures

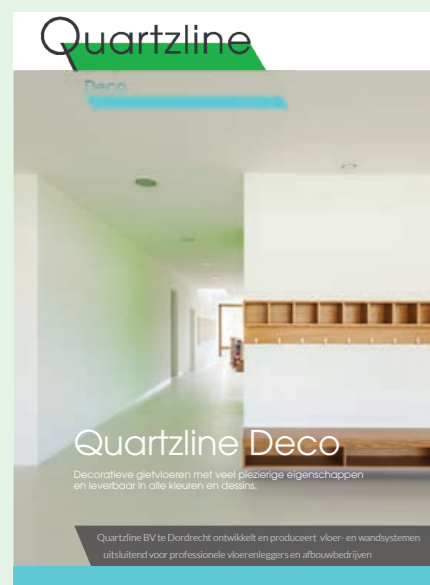


All our floor and wall systems are clearly and conveniently described in colourful brochures. The brochures are informative, handy and give customers the opportunity to list all the advantages of our floor and wall systems in their own time.

These brochures can be requested from Quartzline on +31 (0)78 651 31 00.



order your free brochures



## Satisfied with Quartzline

### Vloerstart levels tennis floors

Vloerstart from Etten-Leur has levelled the floors under the five tennis courts in sports centre ORS ZUIT NL in Etten-Leur with Quartzline Construct levelling screeds. Peter Leesmans of Vloerstart: "With the Quartzline levelling screed, we levelled out 3,250 m<sup>2</sup> of tennis floors and made them perfectly even."



### Rituals Charleroi has a new subfloor

GarantFloors from Almelo has completely renovated the subfloor of a Rituals store in Charleroi, Belgium. Due to the condition of the floor and the surface area (333 m<sup>2</sup>), eight tons of Quartzline Construct Underlayment 2-20 mm were required for this job.



## Quartzline floors in AFAS head office

BE Vloer en Visie BV from Oldenzaal was responsible for the floor finishes in the industrial kitchen, the serving counter, the cold stores and the café areas of the AFAS head office in Leusden. The total surface of the floor finish was approximately 680 m<sup>2</sup> with associated covered skirting. This project was realised with Quartzline Primer GW, Quartzline Mortel Coloured 0.4-1.4 mm RAL 7036, Quartzline Sealer Topcoat E and Quartzline Topcoating PU MG Mat.

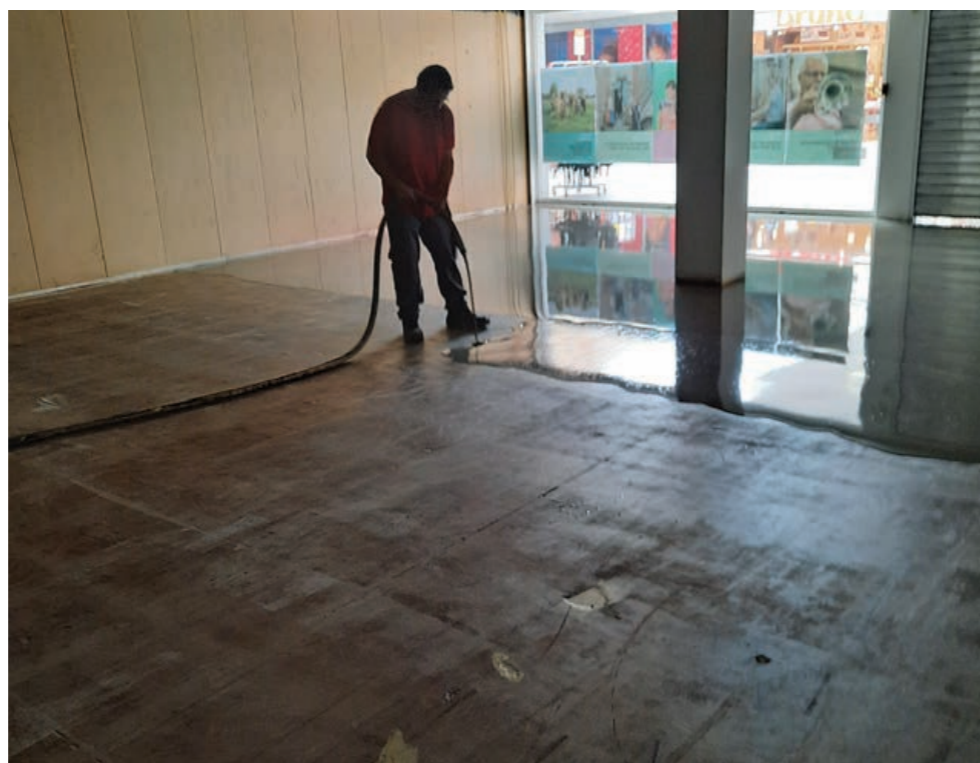
## De Koning lays a smooth floor

Woninginrichting De Koning BV from Rotterdam has closed the slots of the installed underfloor heating in a house in Rotterdam with Quartzline Cementitious MRP repair mortar. The entire floor was then levelled with Quartzline Construct Underlayment 2-20 mm levelling screed.



## Egalizer BV renovates shop floor

Floor finishing company Egalizer BV from 's Hertogenbosch has delivered an as-new shop floor in shopping centre De Hooze Meeren in Hogezaand. The floor was in urgent need of a thorough renovation. The floor, with a surface area of 700 m<sup>2</sup>, was levelled with a 5-mm layer of Quartzline Construct levelling screed.



# The factory

In 2020, Quartzline BV moved into new business premises at W.A. Boogaerdtstraat 5 in Dordrecht. What immediately stands out is the huge silo tower next to the company premises. This almost 40 metre-high tower contains 24 silos in which the raw materials are stored.

The computer-controlled supply of raw materials such as resins, pigments, fillers and additives ensures a controlled quality process. A mixing platform, which consists of a dissolver and four mixing tubs in cloverleaf arrangement, provides a capacity of five tons for both production batches of cast floor or coating. The production of our primers, lacquers and coatings takes place on a second mixing platform.

Due to the growing demand for PU floors, a new PU production line was recently commissioned. The new PU production line is fully automated and delivers constant and excellent quality PU. The production capacity of PU has doubled with the new line.

Quartzline can now call itself one of the largest producers of floor systems in the Netherlands. Our philosophy is to invest and innovate. This innovation takes place in our

own laboratories. Every day, we work on improving current products and developing new products.



# Our floor and wall systems

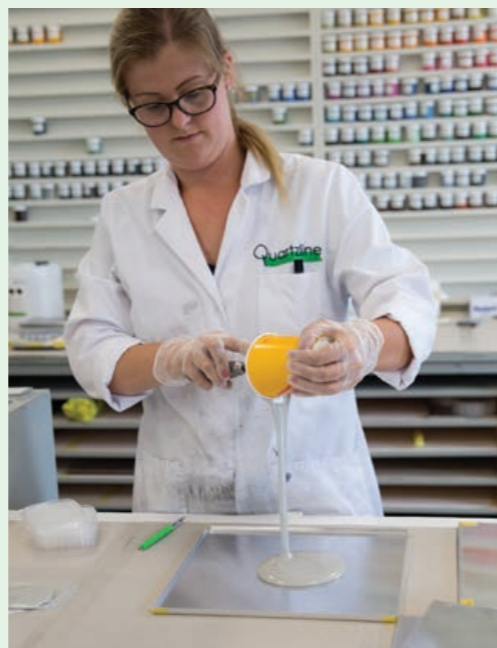


## Quartzline Cem

Cem are decorative cement-bonded floor and wall finishes. Cem Decorative is a cement-bonded levelling screed for a floor finish with a modern and concrete-like appearance. Hardening occurs thanks to the hydration of the mineral binders and the film formation of the polymers. Cem Micro consists of two products, the coarse Cem Micro Base and the very fine Cem Micro Top. Both are a durable micro-cement for floors and walls. This composition for floors and walls provides excellent properties and a beautiful appearance. Cem can be realised in almost all colours.

## Quartzline Construct

Construct are our cement and gypsum-bonded levelling mortars. Available in the standard variant 2-20 mm and also in various variants from 1-10 mm for upholsterers, to 5-40 mm for renovation work. Construct Underlayment is intended for levelling cement-bonded substrates and old tiled floors. Construct Alpha Underlayment is our gypsum-bonded levelling screed for levelling anhydrite and cement-bonded subfloors. The levelling screeds are also available with fibre reinforcement. Construct is recommended when renovating poor subfloors.



## Quartzline Mortar

Mortar can handle a heavy load and meets the strictest hygiene requirements. That is why Mortar is ideally suited for wet areas, where safe working and easy cleaning are important preconditions. This seamless floor ensures a perfect connection to drains and manholes. This creates a hygienic, liquid-tight floor. A finish with hollow skirting boards ensures a seamless connection to the walls. This prevents dirt accumulation. By adding flakes to the floor, many special designs are possible.



## Quartzline Marble

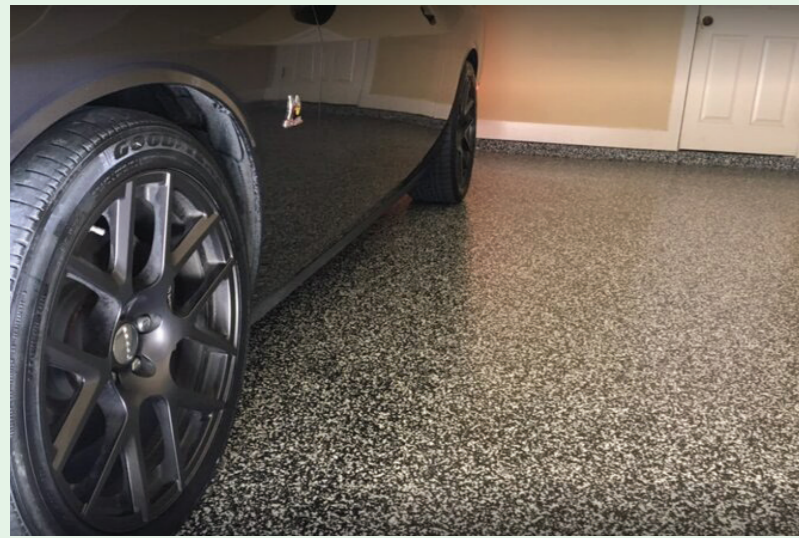
Marble is a seamless flooring system, composed of natural marble grains bound by synthetic resin. Marble Indoor is a striking floor system made of real marble. The marble is available in the following grain sizes: 1-4 mm and 4-8 mm. The specially rounded grains ensure pleasant processing and a beautiful appearance. Marble Outdoor is a polyurethane bonded marble floor especially for outdoor use. All kinds of variations and designs can be applied with the marble. The marble grains are natural products extracted from marble quarries.



## Quartzline Deco

Deco is our range of decorative cast floors, available in all colours and designs especially for homes. Deco UV: offers the best protection against UV radiation. Available in three variants: SL PU UV, SL PU UV NF and SL PU UV HD. Also available in a Deco UV Ultra variant with a damping rubber granulate mat or a casting layer of Quartzline Silencio dB (with certificate) under the coating. Deco Comfort D30: comfortable polyurethane floor system. Deco Comfort D30 Ultra: polyurethane floor system with a damping underlay of a rubber granulate mat or a casting layer of Quartzline Silencio dB (with certificate). Deco Premium D60: a multi-purpose, polyurethane cast floor finished with a coloured polyurethane coating. Deco EVO D70: a wear-resistant polyurethane cast floor, often used in business environments where a hard floor is desired. Usually finished with a transparent lacquer. Add decorative coloured flakes for a professional look.

# Our floor and wall systems



Protect floor systems guarantee intensive use and heavy loads. With Protect Coating EPG, you can turn an old floor into a functional, strong floor in one or two layers, which is hardly affected by chemical influences and scratches. Protect SL-EP 2K is a seamless cast epoxy floor system for industrial applications with an optional hollow skirting finish. Protect Fast Cure is a floor finish that can be walked on again quickly, is easy to process and provides a beautiful end result.



Stone is our decorative quartz floor that brings colour and design together and comes into its own in any interior. Available in various grain sizes. Stone Indoor is a robust seamless floor system, wear-resistant and can be applied in all possible colour combinations. In addition, the floor is extremely strong and suitable for underfloor heating. Stone Outdoor is a polyurethane bonded quartz floor especially for outdoor use. Beautiful patterns and designs can be applied with the coloured quartz.

# Fast delivery times



Quartzline BV offers fast delivery times. Online ordering is easy. You can place your order 24/7 through our online store at [www.quartzline.nl](http://www.quartzline.nl). The rule of thumb for many of our products is click today to collect tomorrow. We deliver some products within a few days. Good advice is also important to us, which is why we are happy to help you personally. Professional employees are at your service every day. So feel free to contact us via chat, email or telephone.

## Pick up or delivery?

Want to collect your order from our plant in Dordrecht? We open at 6 am so you can get to the construction site on time. We will make sure your order is ready at W.A. Boogaertstraat 5 in Dordrecht. In addition, we deliver throughout the Netherlands and the rest of the world every day.







# Quality

The high-quality production process, the modern laboratory, but also all other resources and facilities make Quartzline BV an extremely modern company where quality is one of the important pillars. We keep a close eye on this because one thing is certain; fine-tuning, adjusting and keeping up to date is always important.



# Inspections

The recipe for every floor and/or wall system that leaves the factory is accurately recorded. The products therefore arrive at the customer in a constant and high quality. Every batch that leaves Quartzline is inspected for quality.



# Innovation

Quartzline constantly works to improve its floor and wall systems and associated products. We have two laboratories for this. In these modern laboratories, research and innovation are part of the daily activities. We believe the best isn't good enough. That is why we are looking for improvements every day.

We closely follow trends and market developments. In fact, we want to be a trendsetter. That is why in our laboratories we are continuously working on product improvement and the development of new products. Before introducing new products, we carry out practical tests in collaboration with various selected applicators.

Quartzline floors are of high quality and are composed of high-quality raw materials. Our laboratories closely follow all developments and trends in areas such as raw materials, products, laws and regulations, sustainability and the environment.

Quartzline is a modern company that constantly develops new recipes, naturally taking into account people and the environment from the government and legislation. The production process is supervised and controlled by our quality department. We not only inspect the quality of every order that leaves our premises, but also whether the order meets our quality requirements and whether it fully meets the statutory and environmental requirements. This way, we guarantee the well-known Quartzline quality.





# Quartzline makes your life easier



## Calculate your floor with the floor calculator

The floor calculator on the homepage of our website allows you to calculate the desired floor within minutes. From repairing or levelling the subfloor to the top layer; the floor calculator provides you with all the information you need. Enter the desired number of m2 and follow the simple questionnaire.

# Showroom and guided tour

We have a spacious showroom at our factory in Dordrecht where you can take a closer look at all the Quartzline floor and wall systems. Feel free to bring your customers to our showroom and end users are of course also welcome to gain inspiration or to get an idea of what Quartzline has to offer.

Of course, you can also discuss the options of our floor and wall systems as well as your wishes and ideas with one of our employees.

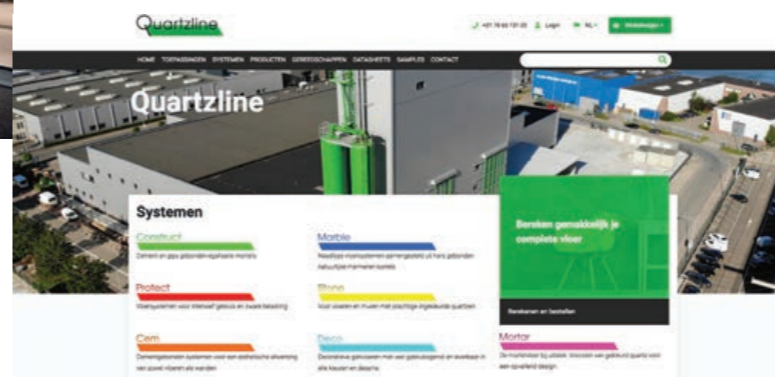
After a visit to our showroom, we cordially invite you for a tour of our factory and laboratories. This way, you can see with your own eyes how things work at Quartzline BV in daily practice.

Call + 31 (78) 651 31 00 to schedule an appointment for an informal, informative visit to our showroom!



## Product training

In our factory in Dordrecht, we provide product training on request, aimed at practising practical situations with Quartzline systems and products. Product training takes a maximum of half a day. There are no costs associated with product training for relations who order products from us. If you want to know more about the product training or request training, please contact one of our account managers.



## Website

All our floor and wall systems with the necessary variants can be found on our website, [www.quartzline.nl](http://www.quartzline.nl). Each variant is described and, where necessary, provided with a system explanation. It is also possible to immediately compose the desired floor and place your order. Feel free to call us if you have any questions. If desired, we can provide you with the necessary support on location.

# Quartzline



Quartzline Netherlands  
W.A. Boogaerdstraat 5  
3316 BN Dordrecht  
T: +31 (0)78 65 131 00  
E: [info@quartzline.nl](mailto:info@quartzline.nl)  
I: [www.quartzline.nl](http://www.quartzline.nl)